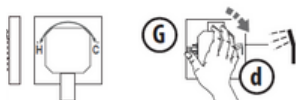


# Jacuzzi Shower Instructions

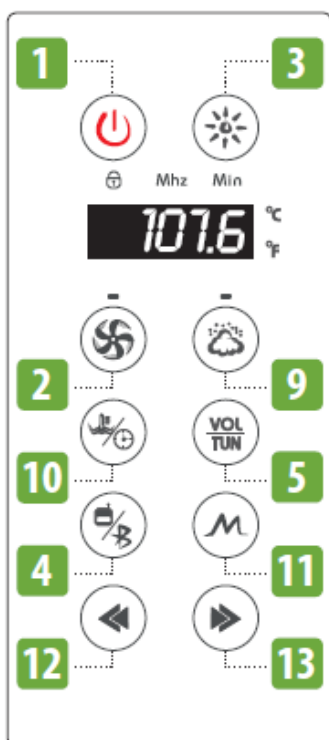
## Manual functions



■ We recommend adjusting the water temperature to the desired value, holding the shower head and turning the ring nut (G) on the diverter to position (d). Pull the mixer lever (R) to allow the water to run and turn it to adjust the temperature.

■ When the water has reached the desired temperature, turn the ring nut (G) to the desired position.

- shower head
- shower
- waterfall
- vertical hydro jets



## CONTROL PANEL

### ■ Bali hammam

- 1: on/off;
- 2: fan and related LED indicator;
- 3: lighting system;
- 4: radio/Bluetooth®;
- 5: volume adjustment/frequency adjustment;
- 9: steam bath and relative led indicator;
- 10: steam bath adjustment;
- 11: radio frequency storage;
- 12/13: parameter adjustment;


## Switching on the shower unit; in stand by

■ Turn the power on using the main switch up from the shower unit:

The display emits an acoustic signal, indicating that the functions can be activated (*stand-by mode*).

## Activating the control panel



- Press the "on / off" key  : the display shows the temperature value of the zone-box (you can set the unit of measurement in degrees °C or °F, refer to the relevant chapter).  
*Note: after about 60 minutes from activation, the shower box switches off automatically.*

*Once the control panel is switched on, the lighting system is activated (the color of the light varies over time according to a pre-established sequence).*

- Then activate the desired function using the relevant button.

### Control panel time-out (lock) and release

- If no button is pressed within 25-30 seconds, the control panel is locked:


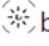

The padlock symbol will flash on the panel.

*NB: if active before the lock, the light remains on.*

- To unlock the panel, keep the "on / off" button   pressed for a couple of seconds.



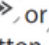
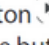
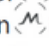
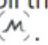
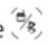
## Lighting system



- To switch the light on / off, press the button .
- To switch between the colour sequence to a fixed colour, press the  button (the light switches off) and then press it again (the light switches on with a fixed colour).
- To change the colour, press the  button repeatedly (the light turns off, then on with a different colour; repeat the process to change the colour again).  
After the last colour, the colour sequence is shown again.

## Using the radio



- To turn the radio on, press the  button (the frequency for the last station listened to shows on the display).
- To change stations:
  - press the button  ("MHz" will flash on the panel);
  - press the button  or  to change (more or less) the frequency;
  - hold down the button  to save the set frequency (the channel to which it was assigned, e.g. 3ch will appear on the display);
  - to scroll through the channels relative to the saved frequencies (from 1 to 8), press the button .
- To turn the radio off (and switch to Bluetooth®) press the  button; press it again to switch off both functions.  
*Note: on the Bali hammam model, if a Bluetooth® device has not yet been connected, the E6 error message will appear (this message may also appear if the Bluetooth® connection has been interrupted).*
- Other functions can also be activated when the radio is on (except Bluetooth®).

## Listening to music via Bluetooth®



■ To activate Bluetooth®, press the button twice (the first time the radio switches on, the second time Bluetooth® is activated; if you want to switch from the radio to the Bluetooth® function, press once).

■ Pair your device (MP3 player, smartphone) with the shower unit (identified by the abbreviation "SANJUN-MUSIC" - in the Bali shower model - or the abbreviation "SANJUN\_BT" - in the Bali hammam model).

If requested, enter the password 0000.

■ If the connection has been successful, when the Bluetooth® function is selected the word "bt" will appear on the display; otherwise, repeat the previous procedure.

■ Turn the music on on your device.

■ To select the songs in the playlist act like this:

- press the button ("bt" will appear); then, use the buttons or to scroll through the list of the songs available.

■ Other functions can also be activated when Bluetooth® is on (except the radio).

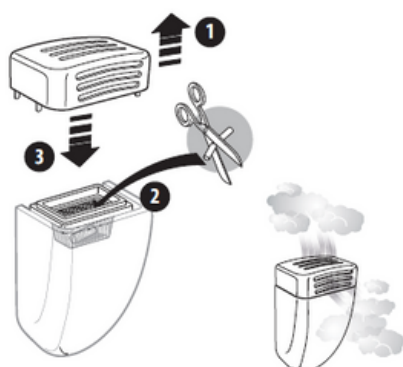
■ Stop the Bluetooth® connection from your device when desired or wait approximately 10 seconds after turning off the shower unit (in the latter case, Bluetooth remains on on your device).

## Adjusting the volume

■ Press the or button to increase or decrease the volume.

The regulation ranges from a minimum of 0 to a maximum of 15 (db).

## The Turkish bath (Only Bali hammam model)



■ The steam dispenser (present in the lower area of the shower enclosure panel) can be used as an aroma diffuser.

Open the dispenser and insert one or more scented sticks (also refer to the manufacturer's instructions). Then close the dispenser.

■ Press the button to access the Turkish bath (the relative LED indicator will also turn on).

The pre-set duration is 45 minutes, while the temperature is 45 °C.

■ To change the usage time, press the button : when the word "min" starts to flash, it is possible to change the function use time (from a minimum of 1 minute to a maximum of 50; the value shown represents the time currently set).

■ Press the button again: when the "°C" symbol starts to flash the use temperature can be changed using the button or .

The control panel, unique for the various models, allows to set values between 25 and 60 °C. On this specific model the characteristics of the steam generator have been appropriately sized so as to reach temperatures that on average stand at 45-50 °C max (at an ambient temperature of 20 °C and nominal supply voltage).

**In an case, usage duration of the Turkish bath must be suited to user tolerability. Immediately exit the shower if you feel dizzy and/or nauseous.**

■ YOU can stop the cycle by pressing the button ; wait about five minutes before turning off the main switch, so that the steam generator is emptied.

It is advisable not to activate the fan during the Turkish bath.